



spa baths
Rest & Relaxation





spa baths
Rest & Relaxation

What do we mean by **rest and relaxation?**

The focal point of a well conceived bathroom is always the bath.

Renaissance has added a factory fitted Airspa system to a selected range of popular bath designs. The benefits of this system, combined with the wide range of baths available enable you to discover just how luxurious your bathroom could be.

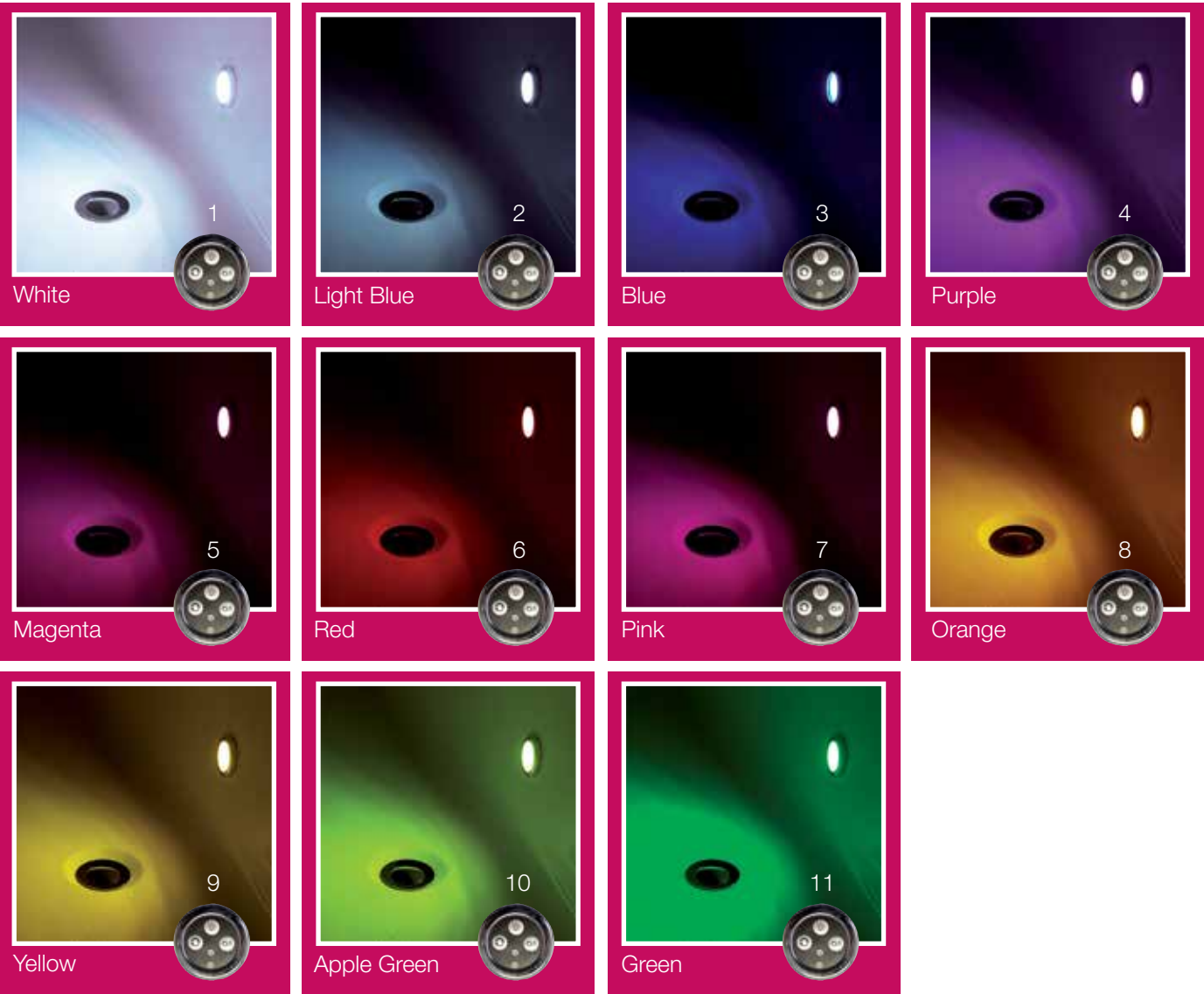
Air is delivered through strategically positioned micro holes in the base of the bath so that there are no protruding jets in the base.

This allows for a comfortable and invigorating experience and is backed up by automatic dry out facility on all models.

All the Spa baths come complete with Armour Plus reinforcement as standard and a double skinned bath panel has been developed for the rectangular, bath range.

Light colour options (optional extra)

This innovative LED light system creates the desired mood with numerous solid colour options and five colour sequence settings to provide a relaxing bathing experience. This is achieved in sequence order (as numbered below) by pressing the light button symbol.



Light sequence options

12

13

14

15

16

Energy	Tonic		Relax		Sun		Dream		
Red	30 Secs	Yellow	30 Secs	Blue	30 Secs	Yellow	20 Secs	Green	60 Secs
Orange	30 Secs	Red	30 Secs	Green	30 Secs	Orange	15 Secs	Blue	60 Secs
Yellow	30 Secs	Green	30 Secs	White	30 Secs	Yellow	20 Secs	Light Blue	60 Secs
White	30 Secs	Repeat sequence		Green	30 Secs	Light Blue	15 Secs	White	60 Secs
Yellow	30 Secs			Repeat sequence	Yellow	20 Secs	Orange	60 Secs	
Orange	30 Secs			White	15 Secs	Red	60 Secs		
Repeat sequence				Repeat sequence		Purple	60 Secs		
								Repeat sequence	



Kelso 1680



Length: 1680 mm

Width: 685 mm

Jubilee 1700 / 1800



Length: 1700 mm

Width: 700 mm

Length: 1700 mm

Width: 750 mm

Length: 1800 mm

Width: 800 mm

Length: 1800 mm

Width: 900 mm



Ryal 1700



Length: 1700 mm

Width: 750 mm

Raphael 1700



Length: 1700 mm

Width: 800 mm



Ashcot 1700



Length: 1700 mm

Width: 750 mm

Krest 1700



Length: 1700 mm

Width: 700 mm

Bow: 800 mm



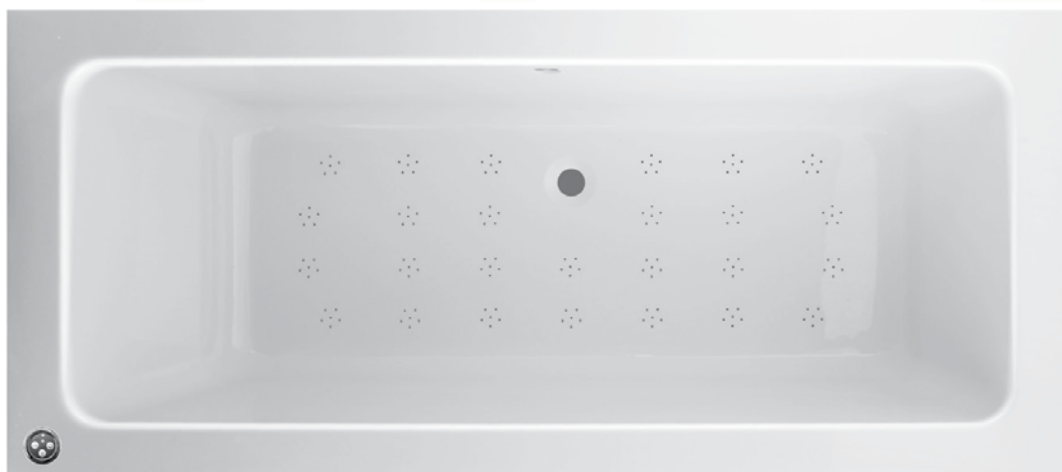
Electra 1800



Length: 1800 mm

Width: 800 mm

Alveus 1700 / 1800



Length: 1700 mm

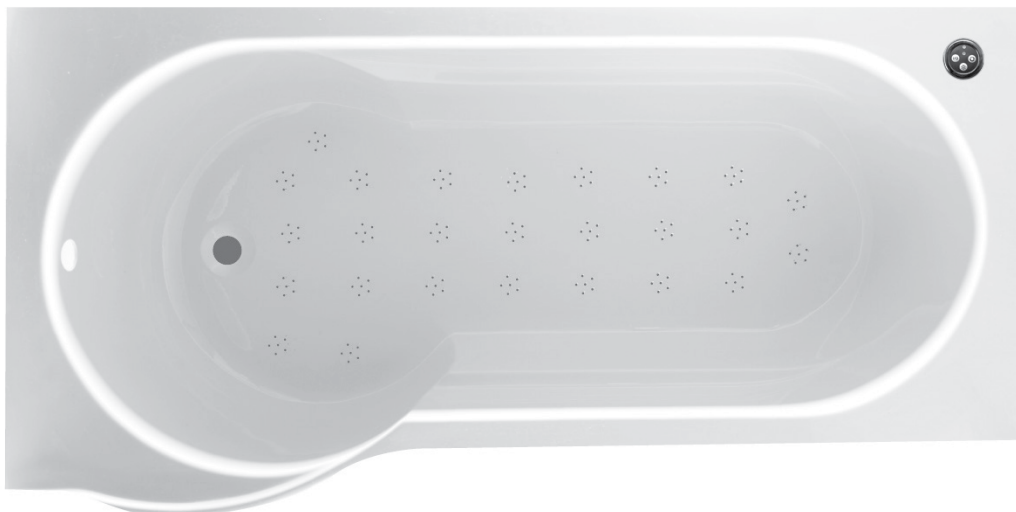
Width: 800 mm

Length: 1800 mm

Width: 800 mm



Ianthe 1700



Length: 1700 mm

Width: 750 mm

Bow: 850 mm

Tiepolo 1500



Length: 1500 mm

Width: 1000 mm



Lotis 1400



Length: 1400 mm

Width: 1400 mm

Buxton 1800



Length: 1800 mm

Width: 800 mm

Panels

Reinforced backing



Premier Reinforced Panel

Length: 1700 / 1800 mm (front panel) 800 / 900mm (end panel) Height: 515mm



Tiepolo Panel

Details: This panel fits the Tiepolo bath Height: 515mm



Hi-Linear Panel

Length: 1700 / 1800 mm (front panel) 800mm (end panel) Height: 515mm



Lotis Panel

Details: Fits both the Derby and Lotis bath Height: 515mm



Krest Panel

Length: 1700mm (front panel) 800mm (end panel) Height: 515mm



Standard Panel

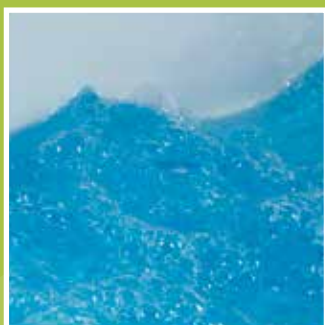
Length: 1700mm (front panel) 700 / 750mm (end panel) Height: 515mm

Features

Electronic Control Touch Pads

no light 2 button

with light 3 button



Wave Motion

To activate hold down the variable speed function button for a few seconds, this then automatically sets the blower into this function.



Auto Dry Out Facility

After switching off the system and the water has passed below the water level sensor the system will restart automatically after ten minutes and switch itself back off after approximately sixty seconds.



Hole Configuration

This shot shows the strategically placed holes positioned in the base of the bath. The size of the bath determines the number and configuration of the holes. (This may alter from images in the brochure).

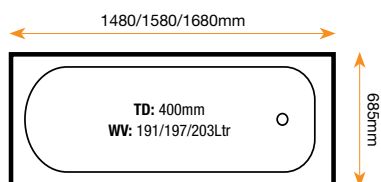


Light (optional extra)

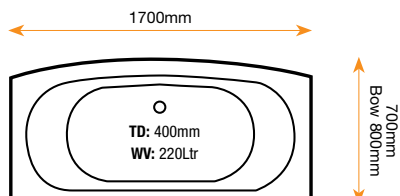
The light has fixed colours and a therapeutic auto colour change sequences.

Technical Data

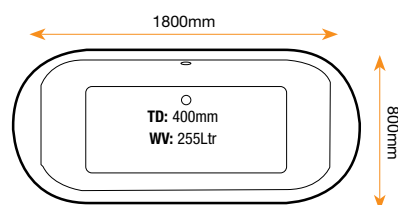
Kelso



Krest



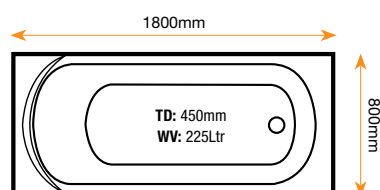
Buxton



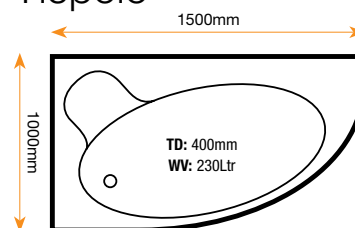
Jubilee



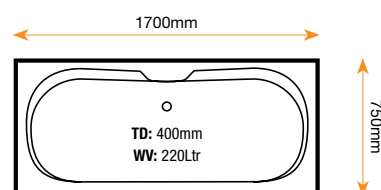
Electra



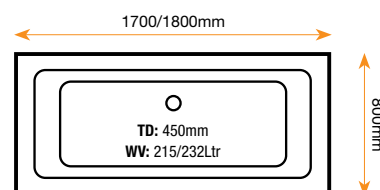
Tiepolo



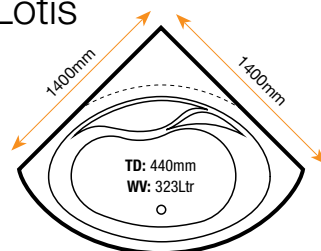
Ryal



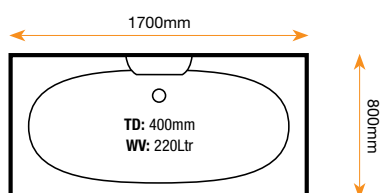
Alveus



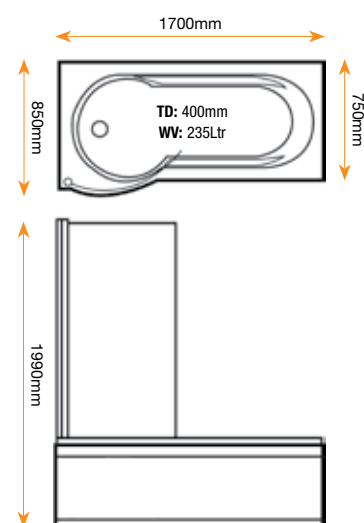
Lotis



Rapheal



Ianthe



Ashcot



Armour Plus

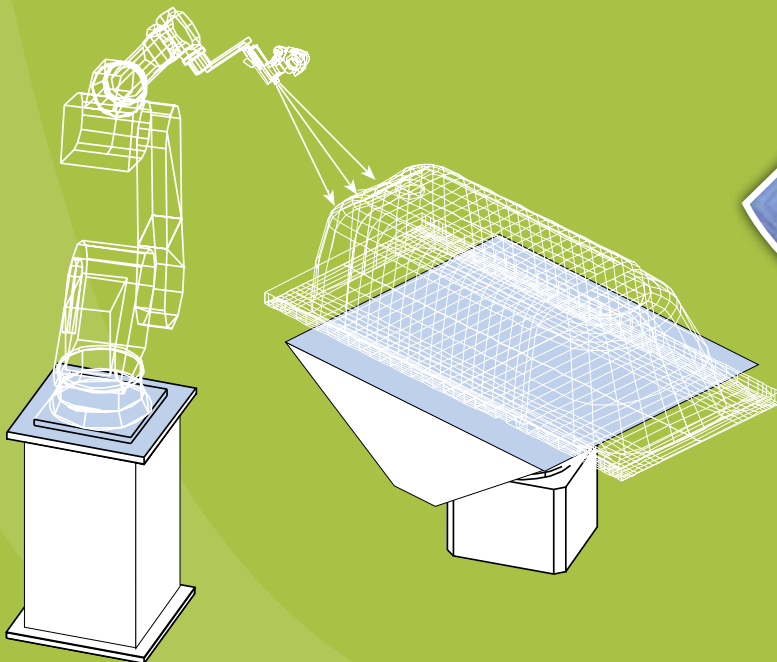
Four great reasons

Armour Plus is a special process which has been developed to create a very rigid, super-strong acrylic bath.

Renaissance has produced the modern equivalent of the old cast iron bath but with a better surface and a warmer touch. How do we do this?

- LAYERONE** Outer surface. High gloss acrylic. Solid colour won't fade or rub off.
- LAYER TWO** Glass reinforced Polyester provides strength & high impact resistance.
- LAYER THREE** Special mix of Polyester resin & glass fibre increases torsional rigidity.
- LAYER FOUR** "Blue" mix of Polyester resins seal the shell & completes the lamination.

Whereas most acrylic baths are constructed in two layers, Renaissance Armour Plus baths have four layers. Each one is designed to provide extra strength exactly where it is needed. This requires manufacturing to a high degree of accuracy such as that which is provided in the motor industry by robots. So we decided to use robotics to do this exacting job for us.





25 Year Guarantee

By using high quality materials and advanced manufacturing techniques, Renaissance make baths which carry a 25 year guarantee against manufacturing or material defects. At their discretion Renaissance will either replace a faulty product or refund the cost. Consequential loss is not covered.

This guarantee only applies to the original domestic purchaser.
Proof of purchase will be required.



Contact Us

Pennywell Industrial Estate, Sunderland,
Tyne & Wear SR4 9EN.
T: 0191 534 6061 F: 0191 534 3626
www.renaissance-baths.co.uk

We endeavor to provide accurate information but
product development may alter certain specifications